

# STORM DOORS & PORCH ENCLOSURES

built for living...engineered for life!

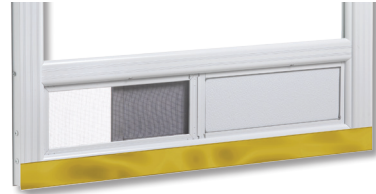


# ALUMINUM storm doors

## FEATURES

- Self lubricating hinges
- Heavy wall extruded aluminum frame
- Diecast internal miter corners
- Durable baked enamel duracron finish
- Heavy duty torsion bar closer
- Installation hardware included
- Tempered safety glass
- Triple rubber sweep
- Victoria Doors #1 to #4 & Colonial comes with interchangeable screen on top section only
- Standard DX handle

### OPTIONS



- Pet Mesh (Polycoated Fiberglass Screen Mesh)
- Bottom venting side slider
- Brass, silver or oil rubbed bronze box Sweep available.

### STYLES



#### CLASSIC

- Available with 1 1/2" & 2" doors only
- Not available with retractable screen



#### MODERN

- Available with 2 1/4" doors only
- Available with retractable screen (SS, DSS, 3LSS Models only)
- Choice of brass or silver DX Handle



Victoria No.1  
Classic Style Only



Victoria No.2  
Classic Style Only



Victoria No.3  
Classic Style Only



Victoria No.4  
Classic Style Only



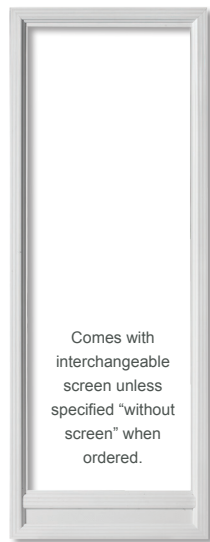
Self Storing  
Classic & Modern



Deluxe SS  
Classic & Modern



3-Lite Self Storing  
Classic & Modern



Comes with interchangeable screen unless specified "without screen" when ordered.

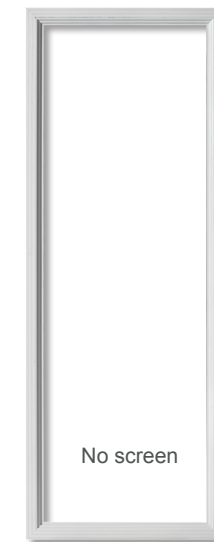
One Lite  
Classic & Modern



Victoria No.5  
Classic Style Only



Colonial  
Classic Style Only



No screen

Full View  
Classic & Modern



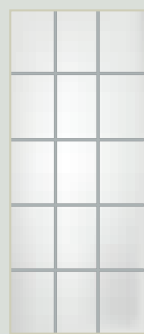
3/4 Self Storing  
Classic & Modern

## OPTIONS

### DECORATIVE OPTIONS



Patterned  
V-Groove Design



15 Square  
V-Groove Design



Border  
V-Groove Design



Floral A  
Sandblasted



Floral B  
Sandblasted



Floral C  
Sandblasted

### COLOUR OPTIONS



White

Chocolate Brown

Mill

Ivory

Commercial Brown

Standard  
1 1/2"  
Doors

Standard  
2" & 2 1/4"  
Doors



Sandalwood

Clay

Grey

Black

Optional  
2" & 2 1/4"  
Doors Only

Everlast's exclusive colours are as true to life as can be reproduced in print. Actual colours may vary from print.



# VINYL STORM DOORS

## FEATURES & BENEFITS

- Aluminum stiffener throughout for strength and maximum durability
- Fusion welded 45 degree corners with mechanically fastened 90° aluminum angle brackets for added strength
- Aluminum pre hung frame for easy installation
- Comes with choice of Brass, Silver or optional oil rubbed bronze elite lever handle with matching door sweep
- Durable Euro paint available in standard paint finishes for exterior only (Interior available in white only)
- For standard paint finishes please refer to our aluminum storm door colour chart
- Custom colours available upon request
- In compliance with storm door CGSB-82-GP-3M standard

# VINYL PORCH ENCLOSURES

- Porch enclosures come standard with fixed panels
- Threshold included
- No exposed screws after installation
- All systems included silver or brass Elite Lever Hardware
- Modern Clean Lines
- Everlast Porch Enclosures are custom made to meet all of your unique requirements. Whether it is used for protection against the winter months or protection against mosquitoes in the summer; there are no limitations as to what your new Everlast Porch Enclosure can do for you

## Available with:

- Sungate hardcoat LowE
- Retractable screen panels
- Executive Panel
- Oil rubbed bronze lever hardware
- SDL Grills
- Euro finish UV reflective paint (Matte finish)



Maxview Door Shown



Prestige Retractable Screen



Executive Panel



## MAXVIEW



- Full tempered glass insert for maximum viewing.
- Perfect for not obscuring decorative glass inserts on entry doors.

## PRESTIGE



- Hidden retractable screen for easy ventilation.
- Screen is hidden in top door rail. Slides from top down and locks into multiple venting positions.
- Decorative horizontal SDL Bar.

Note: Vinyl storm doors also shown on front cover





# ALUMINUM PORCH ENCLOSURES

CLASSIC STYLE ONLY

- All porch enclosures are constructed with 2" heavy wall extruded aluminum frame.
- Each enclosure comes with any classic style of our aluminum storm doors. Refer to our aluminum storm door section for selections.
- Upon receiving the porch enclosure all hardware and joining channels are provided for easy installation. All necessary U, L, & H channels are provided as required.
- Everlast Porch Enclosures are custom made to meet all of your unique requirements. Whether it is used for protection against the winter months or protection against mosquitoes in the summer; there are no limitations as to what your new Everlast Porch Enclosure can do for you.



Shown with optional Prestige Vinyl Storm Doors

# HARDWARE

## Dx Handle



- Brass-25
- White-24
- Black - 23
- Brown-28
- Satin Silver-26  
*(Standard for gray and clay doors only)*
- Ivory-29
- Sandalwood-30
- Commercial Brown-31
- Oil Rubbed Bronze-32

## Elite Lever Handle



- Brass-50
- Silver-60
- Oil Rubbed Bronze-70

## Keyed Deadbolt



- Brass-27
- White-2KW
- Black - 2KBK
- Brown 2KB
- Ivory 2KI
- Sandalwood 2KS
- Satin Silver 2KSS
- Commercial
- Brown-2KCB
- Oil Rubbed Bronze-2KORB

## Interior Deadbolt



- White
- Black
- Brown
- Ivory
- Sandalwood
- Silver
- Commercial
- Brown
- Oil Rubbed Bronze

# HOW TO measure your door.

