

Build


Estate[™]



Up your exterior game.

 **ROYAL**® Building Products
A Westlake Company





This is what real curb appeal and no-worry maintenance look like: a beautiful combination of presence, light, shadow, texture and UV-resistant color called Estate™ Siding.

On Cover:
Estate™ D5D in Granite,
Portsmouth™ D7 Cedar Shingles in Yellow Birch,
Royal® Vinyl Trim in White

Estate™ D4 in Weathered Gray,
Portsmouth™ D7 Cedar Shingles in Weathered Gray,
Royal® Vinyl Trim in Sand



Estate™ D4 in Redwood,
Royal® Board & Batten in Harvard Slate,
Royal® Vinyl Trim in White

Timeless presence and effortless endurance from day one.

Estate™ Siding takes the gorgeous aura of real woodgrain, adds durability and subtracts maintenance hassle. Its teardrop lock design makes it the perfect foil for wear, tear, wind, rain and snow, year after year.

For homeowners with Estate, this is the virtually maintenance-free life: having siding that stands up to harsh weather and doesn't flake, chip, rot or sag. It's possessing timeless design without giving up your weekends.

- **Never needs painting**
- **Designed to withstand hurricane-force winds up to 180 mph**
- **Surprisingly sustainable**
- **Industry-leading Double Lifetime Warranty**

RoyalBuildingProducts.com/Estate



Estate™ D4 in Redwood,
Royal® Vinyl Trim in White

Express your outer feelings. Start with the right color.

When it comes to how your siding presents itself, color is crucial. So we pay a lot of attention to what's trending and what works. Choosing your own colors can be fun, but a bit overwhelming. If you need a nudge, get ideas and tips from our color combination tool at RoyalBuildingProducts.com/RoyalColorCombos.

Chromatix™ technology: Imagine sunblock for your siding.

We develop our colors to keep their eye candy promises when they're fresh, and way down the road. So we fashioned our siding pigments to deliver vibrant curb appeal, resist fade and fend off elements day after day.

Our proprietary Chromatix™ technology color protection features infrared-reflecting pigments to reduce heat buildup. We added a UV formulation with mineral-based pigments to keep siding colors from fading. Sound a bit scientific? It should, because we understand the importance of effortlessly maintaining the look you create in a challenging outdoor environment. And, we back it up with an industry-leading Double Lifetime Warranty. What you get is rich, true color that raises the curb appeal of your Estate™ Siding.

- Featured in Premium and Dark Colorsapes® shades
- Proprietary infrared-reflecting pigments reduce heat buildup
- Warranted to fade less so dark colors stay true



Colorsapes® Dark Colors

Redwood	Natural Cedar	Shamrock	Midnight Surf	Granite	Heritage Blue
Ironstone	Cocoa	Wedgewood	Weathered Gray	Marine Blue	Urban Bronze

Colorsapes® Premium Colors

Cypress	Pebble Clay	Storm	Walnut	Tree Moss	Rockslide
Toasted Almond					

Colorsapes® Traditional Colors

Vintage Cream	Sand	Brownstone	White	Heather	Wicker
Harvard Slate	Linen	Flagstone	Blue Gray	Sterling	Soft Maple

Choice is a beautiful thing.

Estate™ Siding comes in a selection of styles that vary by width and pattern: 4" and 4.5" project a traditional vibe, 5" makes for a clean, contemporary look and Colonial Beaded indulges your elegant side. All of our styles and profiles capture the look of natural wood. And every one of them defies the effects of time and weather.

- **Robust .044" thick panel**
- **Choice of D4, D45D, D5D profiles with a partial rollover hem**
- **Also available in a single-course, Colonial Beaded profile**
- **Gorgeous woodgrain captures the look of natural wood**

A sustainable choice is even better.

Not only is Estate Siding available in a wide selection of colors and profiles, it's also remarkably green. Lightweight, yet durable, it never requires painting or staining. For Estate, sustainability is a lifestyle, not a fad. From production, which starts in facilities that recycle virtually all scrap materials, to manufacturing, transportation and installation (did we mention no hazardous materials are emitted when it's cut into?) it's a clear frontrunner in the cladding game.

- **Manufactured from recyclable materials**
- **Rivals cedar in overall green performance**
- **1/3 the environmental impact of fiber cement**

Estate™ D4 in Pebble Clay

Estate™ D45D in Midnight Surf

Estate™ D5D in Wicker

Estate™ Colonial Beaded in Flagstone

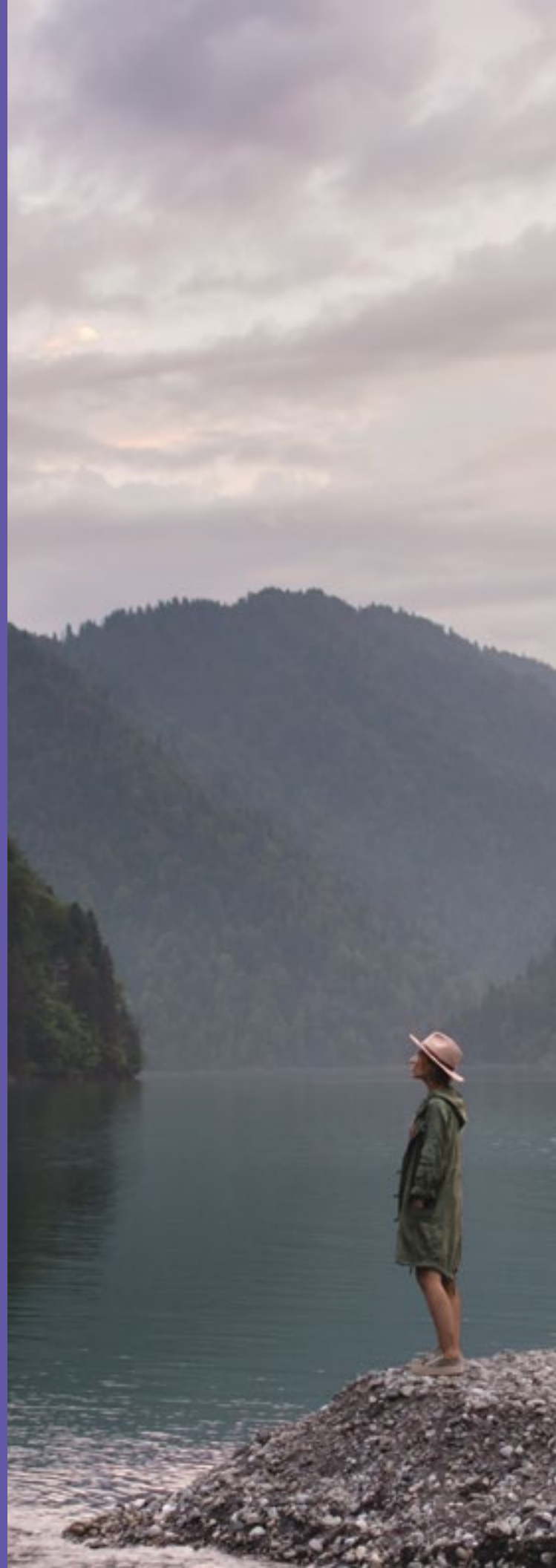
We'll get you to your "wow" place.

Achieving the exterior that expresses your home the way you want it takes time, thought and the right combination of siding, trim, accents, color and dimension. But the experience doesn't have to be painstaking or frustrating.

We're here to make exterior home design exciting—whether you're searching for a complementary fusion of styles and textures or the homerun palette that takes your home to the next level. In addition to our products, we offer inspiration through LiveAbode™, our online design magazine. It will fuel you all year long with trending ideas, tips and thoughts on everything from maximizing landscaping space to upcycling lighting fixtures.

Visit [LiveAbode.com](https://www.liveabode.com)

L I V E **A** B O D E



Fine tune your outer awesome.

Make siding, trim and color featured players in your design story. Use our HomePlay™ online design tool to see how different exterior elements work. Start by checking things out on your own home, and keep playing until you get to the perfect expression of your style.



Easy on the accents

For a lighter touch, keep the lines and complementary accents clean, and the ornamentation to a minimum. Use standard window trim and corner posts for an understated profile.

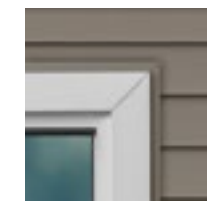


Enjoy all the trimmings

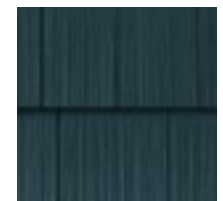
Bring your exterior further out of its shell with wider Conceal™ Corner and Window Trim and Royal® Window Shutters. Complement with Portsmouth™ Shake & Shingles Siding in a contrasting color and texture in the gables. Use Royal® Column Wraps on your porch as a last emboldening detail.

See how it all comes together at [HomePlayByRoyal.com](https://www.homeplaybyroyal.com)

- **Choose a home from our pre-mapped selection of houses or upload your own.**
- **Edit styles and colors as you customize different parts of your home exterior—from siding and trim to windows and roof.**
- **Create an account and save your projects.**



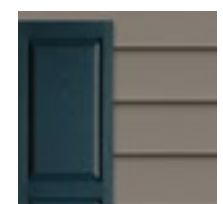
Trim



Accent Siding



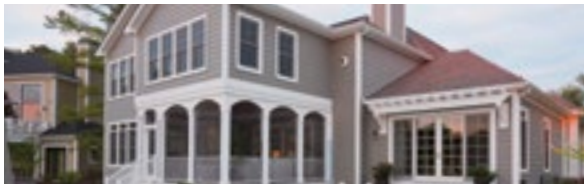
Column Wraps



Shutters

HomePlay
BY ROYAL

Royal® Building Products exists for one reason: to push the limits of what every type of exterior can be. We strive for best-in-class manufacturing and industry-leading innovation. What drives us? Every homeowner who demands exteriors that add value, perform impeccably, look amazing and make their lives easier. Our goal is to bring more products, more styles, more technology, more design insight and more sustainable solutions to the attention of everyone who cares about creating the best exterior possible. Build Royal™



CELECT® CELLULAR COMPOSITE SIDING



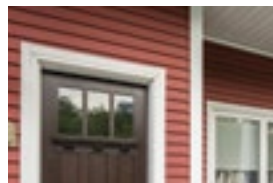
ZURI® PREMIUM DECKING



ROYAL® TRIM & MOULDINGS



HAVEN® INSULATED SIDING



ROYAL® VINYL SIDING



ROYAL® SHUTTERS,
MOUNTS & VENTS



ATLAS STONE™



PORTSMOUTH™
SHAKE & SHINGLES



CEDAR RENDITIONS™
ALUMINUM SIDING